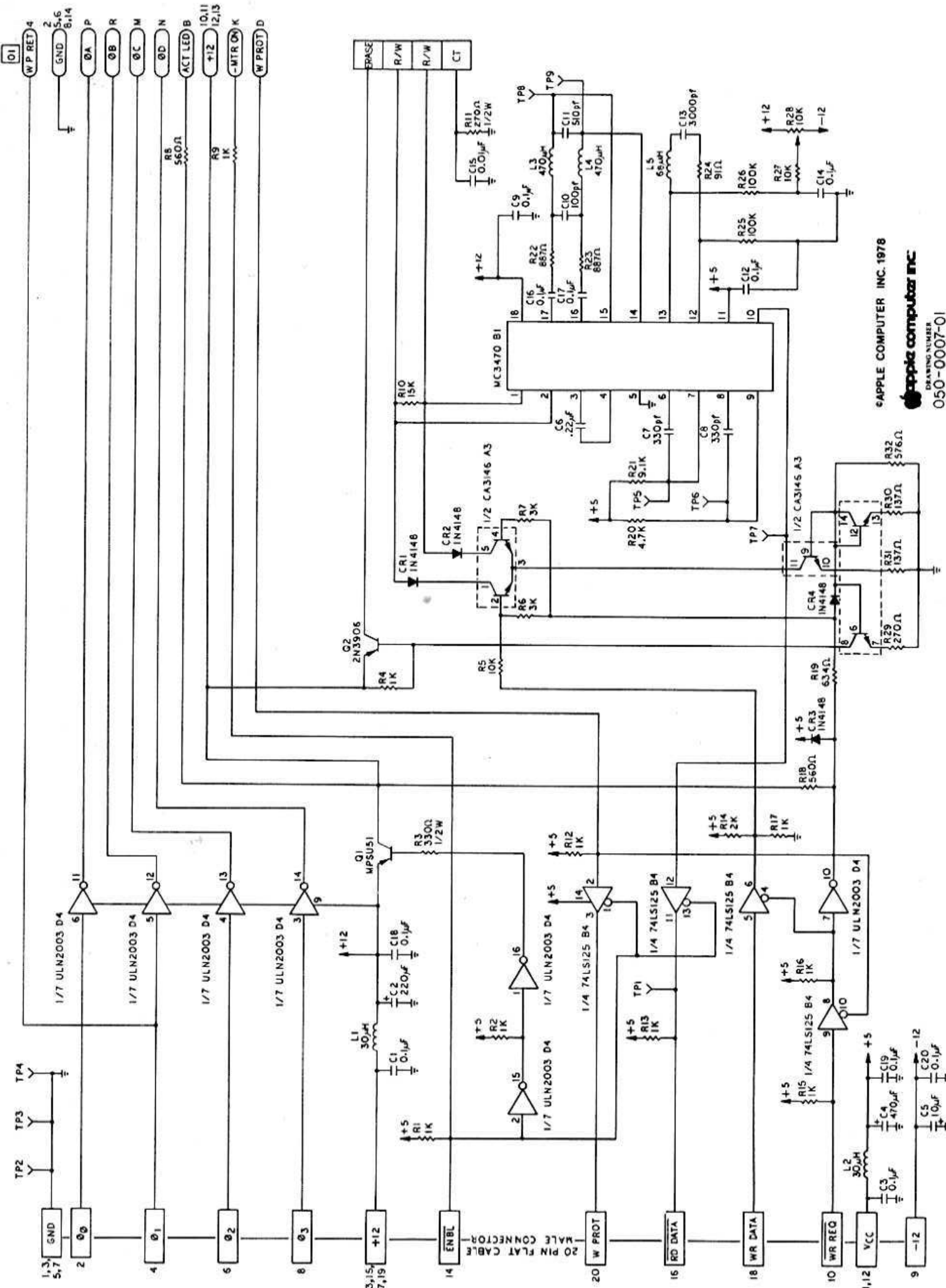


CIRCUIT SCHEMATIC: DISK II ANALOG BOARD



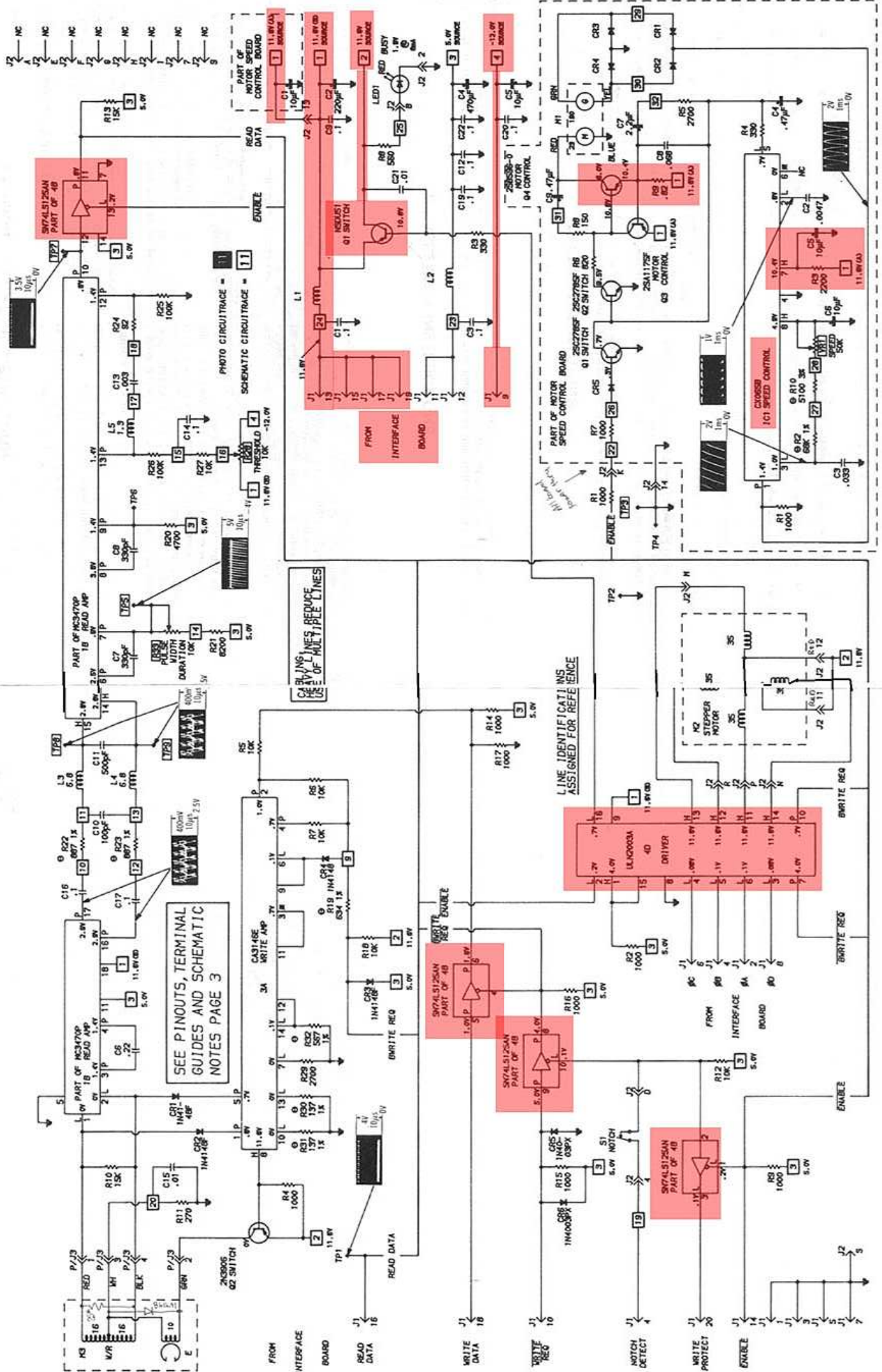
APPLE COMPUTER INC. 1978

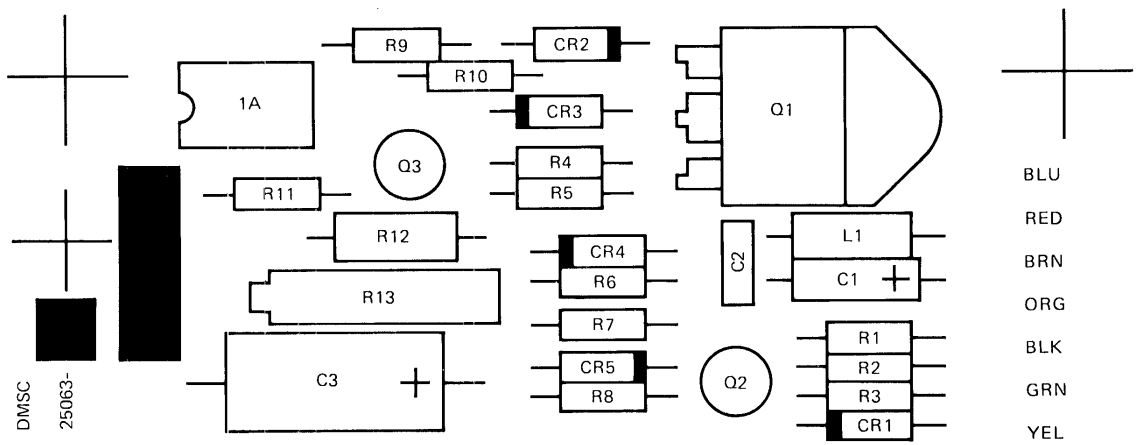
supplies computer inc.

DRAFTING NUMBER

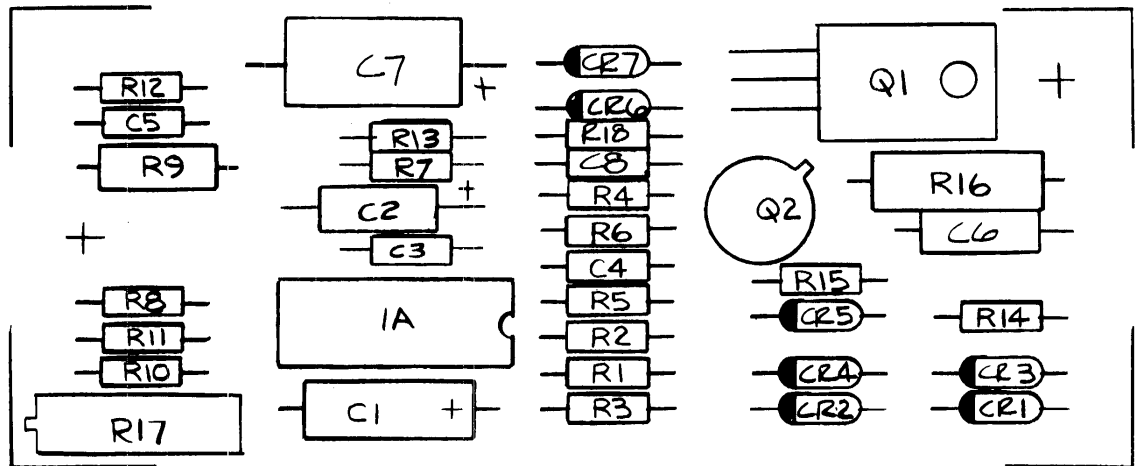
DRAWING NUMBER
050-0007-01

APPLE MODEL DISK II

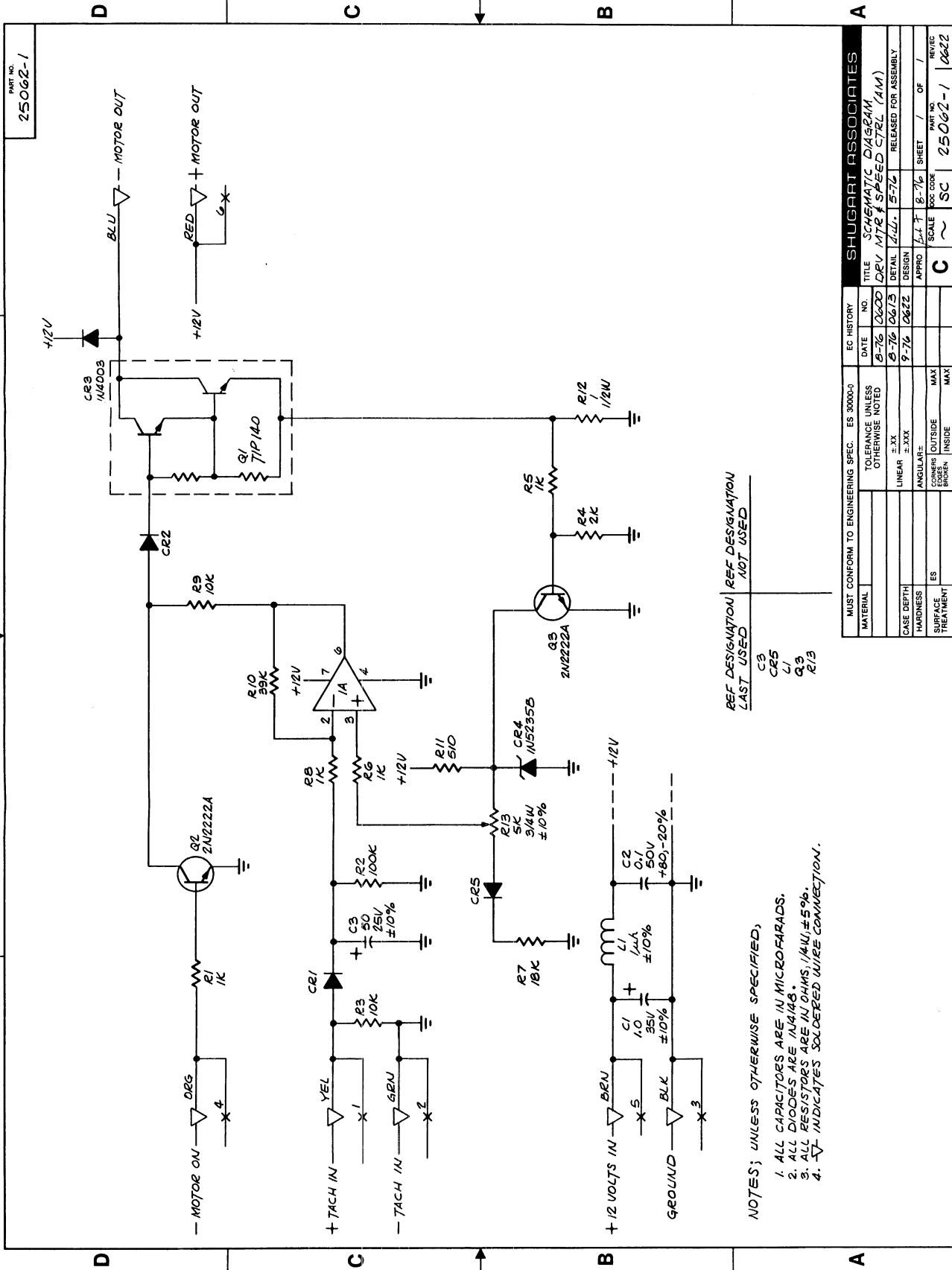




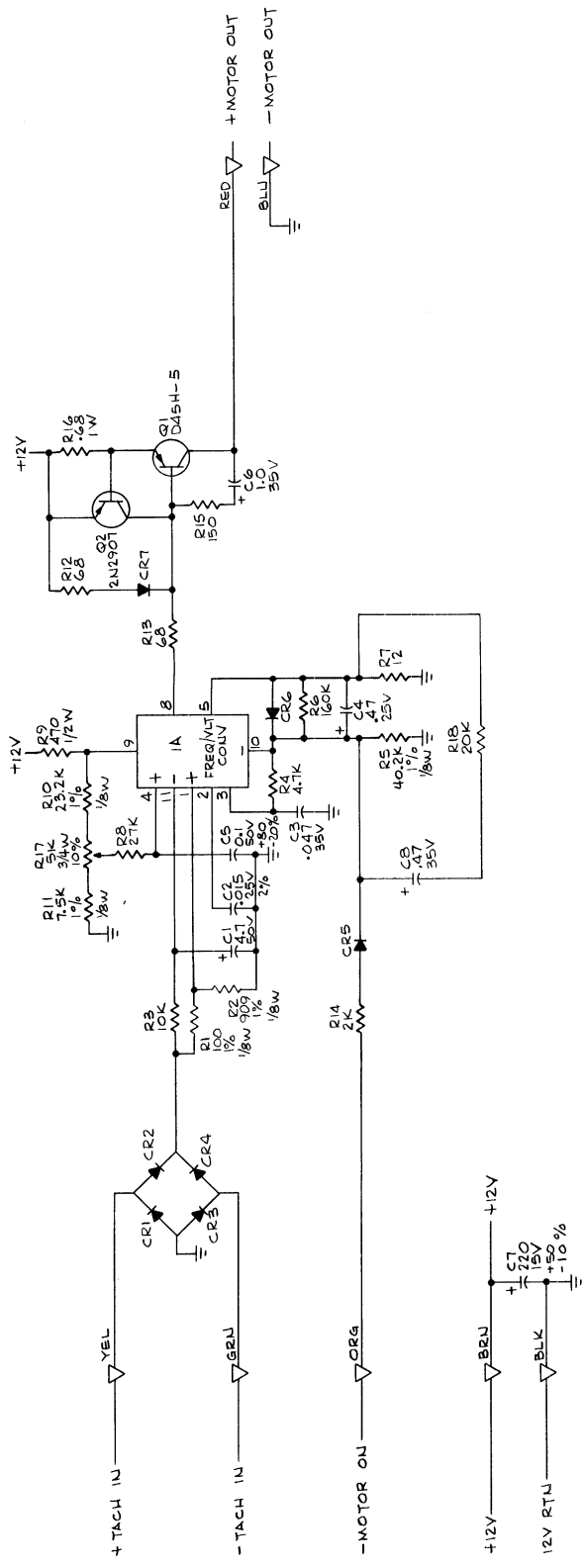
COMPONENT LOCATIONS
MOTOR CONTROL PCB ASSEMBLY 25063



COMPONENT LOCATIONS
MOTOR CONTROL PCB ASSEMBLY P/N 25129



MATERIAL		EC HISTORY		SHUGART ASSOCIATES	
NO.	DATE	NO.	DATE	TITLE	NO.
1	8-76	1	8-76	DEV MTR # SPEED CTRL (AM)	1
2	8-76	2	8-76	DETAIL	2
3	8-76	3	8-76	DESIGN	3
4	8-76	4	8-76	APPRO	4
5	8-76	5	8-76	SCALE	5
6	8-76	6	8-76	SHEET	6
7	8-76	7	8-76	OR	7
8	8-76	8	8-76	REVISED	8
9	8-76	9	8-76	25062-1	9
10	8-76	10	8-76	0622	10



- NOTES: UNLESS OTHERWISE SPECIFIED:
1. ALL CAPACITORS ARE IN MICROFARADS, 10%.
 2. ALL DIODES ARE 1N4148.
 3. ALL RESISTORS ARE IN OHMS, 1%, 15%.
 4. ∇ INDICATES SOLDERED WIRE CONNECTION.
 5. INTEGRATED CIRCUIT 1A IS TYPE LM2917N.

REFERENCE DESIGNATIONS
LAST USED NOT USED

CR
C1
C2
R1B

MUST CONFORM TO ENGINEERING SPEC. ES 3000-3		ES HISTORY		SHUGART ASSOCIATES	
MATERIAL	DATE	NO.	NO.	TITLE	SCHEMATIC DIAGRAM -
TOLEMANE	6/78	033A	033A	DESIGN	DESIGN
USE	8/78	0361	0361	DESIGN	DESIGN
CASE DEPTH	LINEAR	XXX	XXX	APPRO	APPRO
HARDNESS	ANALOGUE	XXX	XXX	APPRO	APPRO
SURFACE TREATMENT	COMPAR	OUTSIDE	MAX	SCALE	SCALE
	SMOOTH	INSIDE	MAX	BOX CODE	BOX CODE
				WIRE	WIRE
				OF	OF
				DATE	DATE
				25128-1	25128-1
				1	1